

CARING FOR YOUR SEWER

Slow flowing drainage, gurgling noises when you flush the toilet, dampness – all of these can be an indicator of something growing under the surface. What's growing? Roots!

Tree roots growing inside sewer pipes are often the most expensive sewer maintenance item experienced by homeowners. Similarly, roots from trees are one of the most common culprits of sanitary sewer backups and damaged sewer pipes.

Homeowners are financially responsible for keeping their sewer lateral running free and clear from their residence all the way to the connection to the sewer main, found in the street. Make sure to take good care of your pipes to prevent costly repairs!

CONTACT US

The Upper Montgomery Joint Authority

-  Jennifer Leister,
Executive Director
-  1100 Mensch Dam Road,
Pennsburg, PA 18073
-  (215) 679 – 5133
-  Find us on Facebook!
-  Open Monday-Friday
7 AM-3:30 PM
-  www.umja.org
Visit our website for information
on contacting us in the event of
a sewer emergency.

NOW AVAILABLE: E-billing and an online customer portal! Visit our website to learn more about both. Plus- make sure we have your up to date contact information to receive notifications as needed by phone, text and email.



UPPER MONTGOMERY JOINT AUTHORITY

PROTECT YOUR PIPES



Plant and landscape wisely:

Beautifully landscaped yards can turn into expensive nightmares if roots from trees invade buildings and laterals. Here's a few tips to protect your underground pipes!

THE ROOT ISSUE

Tree roots seek the warm, moist, and nutrient-rich atmosphere that sewer pipes provide. Roots penetrate sewer pipes through cracks or loose joints.

Once inside, the roots will continue to grow and if not disturbed, they will completely fill the pipe with many hairy root masses.

The network of roots begin to trap grease, tissue paper, and other debris that is discharged. Homeowners may notice the first signs of slow drainage. A complete blockage may occur if no action is taken upon the initial signs.

As the roots are growing, they exert considerable pressure at the crack or joint where they entered the pipe. The force exerted can break the pipe and may result in a total collapse, requiring complete replacement.



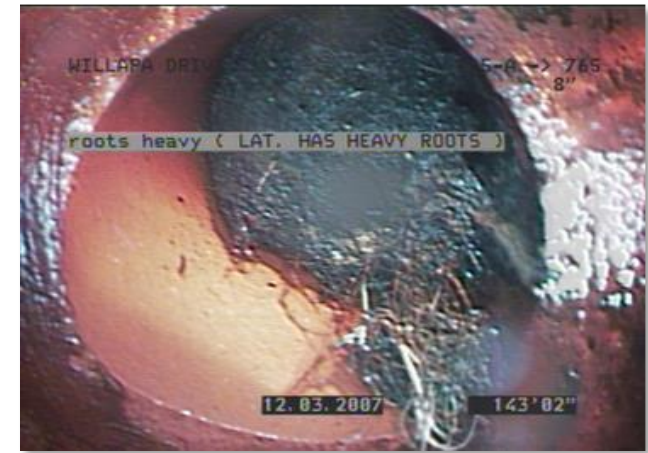
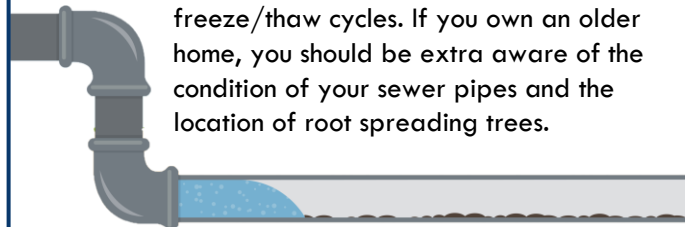
BEST PRACTICES

Follow these tips to keep roots out of your pipes!

- ❑ **Know your sewer lines.**
Having insight into your pipes' properties, age, and location is valuable information to help you prepare to care for them long-term.
- ❑ **Plan and plant wisely.**
Refrain from planting trees within 20 feet of any sewer components. Roots travel far underground, across property lines, and under paved roads. Plan and plant wisely to minimize future problems.
- ❑ **Research before planting.**
Before planting or modifying your landscapes, do some research on what you're planting. Roots of some trees pose little threat, while others have roots that are aggressive and wide-spreading.
- ❑ **Regular inspections.**
Have your pipes inspected frequently. Inspections help to identify signs of concern and at-risk piping.
- ❑ **Use your resources.**
Many resources are available to assist in the prevention of root intrusion. Root control products are available at local hardware stores, and there are a variety of options for root barriers. If you have concerns, don't hesitate to reach out to a professional that will be best equipped to help.

AWARENESS IS KEY

If your home was built before 1980, you may have clay or iron pipes. These pipes are more likely to have cracks or joint problems caused by ground settling or freeze/thaw cycles. If you own an older home, you should be extra aware of the condition of your sewer pipes and the location of root spreading trees.



WARNING SIGNS

Keep an eye out for these warning signs that may indicate a root is intruding on your pipes. We recommend addressing issues at the earliest sign of concern, so they don't turn into urgent matters.

Slow draining water: If you notice your drains are flowing slower than normal, this can be a sign that roots have encroached on your pipes.

Gurgling sounds: Often noticed when flushing the toilet and accompanying slow draining water, gurgling sounds indicate air bubbles that may be present due to root intrusion.

Wetness around drains: If you notice wetness around drains, especially basement floor drains, you should call a professional as soon as possible as this likely indicates a back-up.

Sewer-like odors: Odors resembling sewage smells are indicative of a sewage back-up. This concern should be addressed immediately.

DON'T FORGET:

In Pennsylvania, homeowners and contractors are required to contact PA OneCall, by dialing 811 at least three business days before beginning any digging or excavation project. Visit www.paonecall.org for more information.

