

TIDBITS FROM THE OFFICE

METER INSPECTIONS

Effective immediately, UMJA will be requiring annual inspections of deduction & well meters and their readings.

To keep the Well-Metered billing rate an annual inspection will be required.



For customers that have a deduction meter, consumption will only be deducted if a meter inspection is completed.



What is a deduction meter?

A deduction meter enables customers to realize a savings for water that does not enter the sanitary sewage system.

Examples of water that does not enter the system: lawn sprinkler systems, swimming pools, washing vehicles.

UMJA will be contacting all customers that have a well or deduction meter to schedule an appointment.

The UMJA office remains closed to the public. Staff is available by appointment, phone or email during normal office hours.



Payments may still be made at the UMJA office by drop box only. A Payment drop box is also located at the East Greenville Univest Bank, right past the drive thru window. Additionally, Payment can be made online at ACIPayonline.com.

ACIPAYONLINE recently increased the transaction fee from \$2.95 to \$3.50 per transaction.



Our mailing address changed in 2020. We continue to ask customers to update their records. Please mail all payments to:
1100 Mensch Dam Road
Pensburg, PA 18073

We are noticing a delay in receiving payments from customers that have not updated their online bill payment or accounting software.

REACH US

Upper Montgomery Joint Authority
1100 Mensch Dam Road
Pensburg, PA 18073
215.679.5133
Visit us online @ www.UMJA.org
Follow us @ <https://www.facebook.com/UpperMontgomeryJointAuthority>



The Upper Montgomery Joint Authority

Fall Newsletter

September 2021

A MESSAGE FROM THE BOARD

The Upper Montgomery Joint Authority recently completed a rate study to ensure the sustainability of the authority. As you may be aware, cost for materials is on the rise. In addition, the authority continues to battle aging infrastructure in collection systems, illegal connections and storm water. The rate study found that a rate adjustment was necessary.

This rate adjustment will help ensure the reliability and sustainability of the authority. As Utility costs throughout the industry continue to rise, The Upper Montgomery Joint Authority board is committed to managing these cost while staying efficient, in addition to upholding UMJA's commitment to a sustainable future.



The new rates will go into effect for all bills due after August 1, 2021. The base rate portion of the bill will remain at \$124.19 per unit. The consumption charge has increased from \$4.59 to \$5.66 per 1,000 gallons. The consumption charge is intended to recover those costs that do change with flow. For customers that have a well and are non-metered, the rate will increase from \$219.28 to \$ 241.64. We will continue to make every effort to contain our costs and keep our rates at the lowest level possible.

THE UMJA MISSION

To operate and maintain its wastewater treatment plant and collection system in a socially, ethically and environmentally responsible manner, to protect the health, wellbeing, and quality of life of our customers and the public at large, living, working and playing within the valley.

FROM THE DESK OF JENNIFER LEISTER EXECUTIVE SUPERINTENDENT

2021 Collection System Repairs Continues

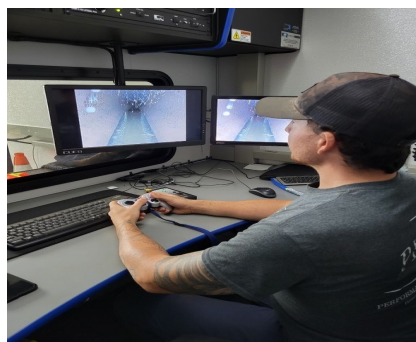
The Upper Montgomery Joint Authority recently purchased a 2021 Close Circuit Televising Truck which was manufactured by Cues. This truck features closed circuit television (CCTV) which is equipped with cameras that relays live footage from within the sewer lines to a monitor via CCTV. The camera can be placed down a manhole (mainline) or sewer cleanout. This new piece of equipment allows Collection System Operators to televise up to one thousand feet of mainline, measuring six inches to 36 inches in diameter. UMJA operators now have the capability to launch 80 feet into a lateral from the mainline, which until this purchase operators did not have the capability to do. A footage counter is connected to the camera, enabling the operator to note the exact location of any service connections or problems. The camera also transmits video back to the CCTV truck that can be recorded for future use. The main purpose of these inspections is to determine the condition of the pipe and if any cleaning, replacement or repair may be necessary.



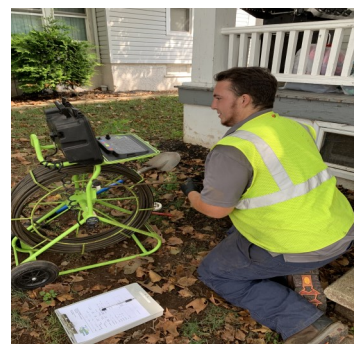
An outside look of the new close circuit televising truck

UMJA inspected 47, 129 feet of pipe in 2021

Red Hill	19,822 Feet	50 Lateral Inspections
Pennsburg	15,915 Feet	38 Lateral Inspections
East Greenville	11,392 Feet	44 Lateral Inspections



UMJA operator viewing footage inside the new televising truck



UMJA operator televising

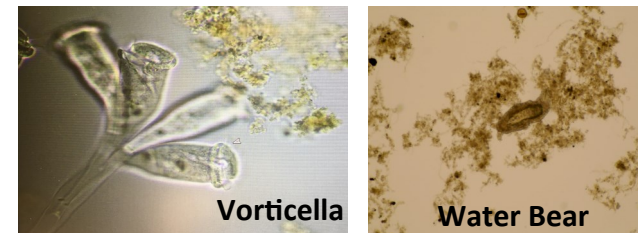


Roots & Grease in a lateral pipe

PLANT OPERATORS CORNER

ACTIVATED SLUDGE PROCESS

Activated Sludge is the process of treating wastewater using a biological reaction that involves microorganisms and oxygen. The activated sludge is a brown mud-like substance that is mixed with the incoming wastewater in the aeration tank. We call this mixed liquor. It then goes through a series of aerobic (with oxygen) and anaerobic (without oxygen) chambers.



These chambers allow the microorganisms to react with the wastewater and remove/breakdown certain chemicals and pollutants from the water, including pathogens (microorganisms that cause disease), Ammonia, and Phosphorous. The mixed liquor is then settled in large tanks called clarifiers.

The activated sludge thickens as it settles to the bottom, while the clear liquid stays on the surface. This liquid is further treated before discharge. The settled activated sludge from this process is then pumped back into the aeration tank, to start the process over again. Because the sludge has living microorganisms, some of the sludge will have to be removed to allow for a healthy system. The sludge being removed gets pumped to our digesters. The digesters are large tanks used to hold and stabilize the microorganisms before the requirements for land application are met.



UMJA Staff on a tour of the reservoir for a team building event

PLEASE WELCOME NEW STAFF MEMEBERS



Tiffany
Operator



Kevin
Maintenance



Michael
Operator